

# FOUNDATION *Connection*

*Spring 2026*



***Building Healthier Communities***



COOKEVILLE REGIONAL  
MEDICAL CENTER  
CHARITABLE FOUNDATION



[www.CookevilleRegionalCharity.org](http://www.CookevilleRegionalCharity.org)

***CRMC Foundation Board members***

Cigi England,  
Laura Wolf,  
Tyler Atkinson,  
Ashley Waters,  
Dr. Barbara Jared,  
Dee Prince,  
Dr. Mariano Battaglia,  
Diana Baranowski,  
Dr. Matthew Bolton,  
Alejandra Cisneros-Conohan,  
Dr. Kurt Gilbert

# Compassionate Care For The Upper Cumberland

The CRMC Foundation is a non-profit organization responding to growing health disparities in our community. We collect donations and use them to help local residents of the Upper Cumberland through a wide range of charitable programs and assistance funds established by our supporters.

**Assistance Funds:** Working with providers in 14 counties to compassionately care for Upper Cumberland residents with charitable healthcare needs. Our focus is to provide services for struggling local residents and their families, focusing on working-poor and at-risk demographics.

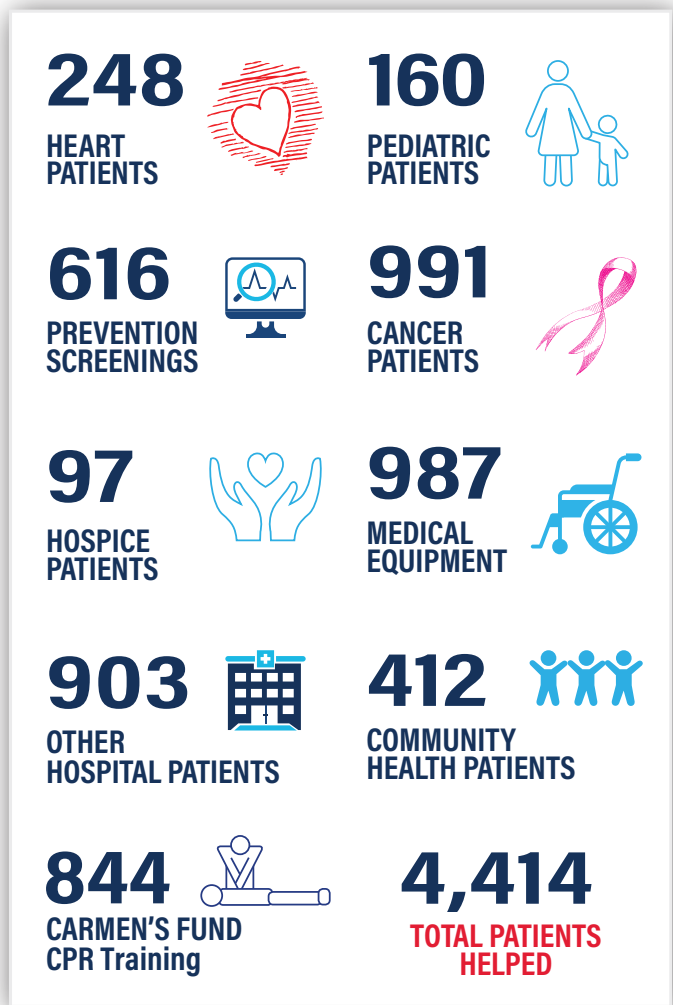
**Programs:** Engaging with regional, collaborative initiatives addressing health and wellness needs in our community. Some programs focus on services within the hospital setting, while others address broader community activities.

Operating and staff expenses at the Foundation are covered through sponsorship from Cookeville Regional Medical Center. This allows 100% of gifts to go toward programs and direct support.

***Together, with donors and partners, we are building a healthier and more compassionate Upper Cumberland community.***

## John Bell

Executive Director,  
Cookeville Regional  
Charitable  
Foundation



# From the Foundation:

# Because of You

## ***Thank you for your continued support.***

Because of you, CRMC Foundation responds with compassion when neighbors face illness or medical crisis. Every gift stays local, and one hundred percent supports patient assistance and health programs in the Upper Cumberland.

We are grateful for the donors, volunteers, and partners who make this work possible. It is an honor to serve such a caring community.



COMMUNITY IMPACT

# A Legacy of Hope



## *Anne Cameron* GOLF CLASSIC

---

For 50 years, the Anne Cameron Memorial Golf Classic has been more than a tournament. It has been a lifeline. As Cookeville's longest running charity golf event, it has provided long term support for the Cancer Patient Assistance Fund at CRMC Foundation and helped thousands of local patients over the years.

Because of this continued generosity, cancer patients receive help with everyday needs during some of the hardest moments of their lives. This milestone anniversary shows what is possible when a community stays committed year after year. Dignity, relief, and hope extend far beyond the golf course.

A special thank you to Lindsay Cameron Gross for being a champion for this memorial event.

## TOM'S STORY

# When the Room Gets Quiet

Tom never thought the quiet would be the hardest part.

Born and raised in the Upper Cumberland, Tom is in his early fifties and worked full time his entire adult life until a sudden illness placed him in a hospital room at Cookeville Regional Medical Center. His doctors are hopeful, but recovery will take time and time without a paycheck.

What keeps Tom awake is not only his health. It is the power bill waiting at home, the groceries his family still needs, and the worry that his wife, who is already working extra shifts, will be stretched even thinner. Tom has always been the provider, and asking for help feels harder than being sick.

When a case manager shared information about CRMC Foundation patient assistance, relief replaced fear. Help with utilities, gas cards for trips back and forth to the hospital, and groceries for the weeks ahead made a real difference.

Because of local donors, Tom can focus on healing instead of bills. In a quiet hospital room, hope returned through neighbors who cared.

You can help patients like Tom.

Support CRMC Foundation patient assistance and keep care local.



**HONORING LIFE AND CREATING COMFORT**

# Memorial Gifts

Just outside the main entrance of Cookeville Regional Medical Center sits a memorial bench honoring Scott Wolf, a beloved husband, father, and community leader. Memorial gifts like this give families a meaningful way to honor loved ones while supporting care for others.

New opportunities include sponsoring flower pots at each hospital entrance, garden spaces, memorial bricks along the pathway, and patient and family chairs inside hospital rooms. Each gift becomes a lasting symbol of love, remembrance, and comfort.

Create a tribute that gives back.

Contact CRMC Foundation to learn more about memorial giving options.



**BUILDING SOLUTIONS TOGETHER:**

# Home Builders Helping Neighbors

Some of the most meaningful challenges our patients face begin at their own front door. CRMC Foundation is sincerely grateful for our partnership with the Upper Cumberland Home Builders Association (UCHBA), which is expanding our ability to provide safe, accessible ramps for patients with critical mobility needs. Each year, we receive requests from individuals who cannot safely enter or exit their homes without assistance.



With more than 100 member businesses, UCHBA brings exceptional skill, generosity, and community spirit. This winter, Saylor Construction, Builders First Source, Ray Ware BJP and Josh Jackson-DelMonaco Construction all donated labor, materials, and expertise to build ramps for several local patients, helping restore safety, dignity, and independence. Another ramp project is already planned. We thank UCHBA and its members for their commitment to serving neighbors in need.

Want to help build solutions? Volunteer, donate, or partner with CRMC Foundation to meet patient needs.



## VOLUNTEERS IN ACTION

# The CRMC Auxiliary and Pet Therapy

The CRMC Auxiliary is a dedicated group of volunteers who offer smiles and support throughout the hospital. You will find them at entry stations, in the gift shop, and supporting special programs like Pet Therapy.

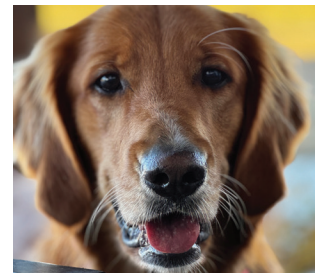
In hospital hallways filled with uncertainty, a therapy dog visit can change the day. Certified therapy dogs and their handlers visit patient floors, the Cancer Center, and cardiac areas to bring calm and connection.

Beloved dogs such as Brinkley, Ashlee, Buttercup, Buddy, Skye, and many others bring comfort not only within the hospital but also throughout the community. Their visits reach schools, senior centers, Tennessee Tech during finals week, and first responders after emergency events.

Pet therapy is about healing, connection, and hope.

To learn more or get involved, contact Volunteer Services.

Call 931-783-2740 or email [cmmaxwell@crmchealth.org](mailto:cmmaxwell@crmchealth.org)



FROM THE FIELD

## Kelly Tripp, Home Health Social Worker

As a home health social worker at Cookeville Regional Medical Center, I am welcomed into people's homes during some of the hardest seasons of their lives. After illness or hospitalization, many neighbors lose strength, independence, and confidence.

Sometimes support comes in simple ways. Items like sock aids, weighted utensils, or safety equipment help people manage daily tasks. Other times, a walker, lift chair, or bedside commode allows a patient to move safely and privately. These tools reduce stress for families and restore dignity for patients.

Through CRMC Foundation patient assistance, donors help provide essential items that families often cannot afford. These gifts help people stay safe, remain at home, and heal with confidence. I see it every day. Simple support can make a powerful difference.

Thank you for caring for your neighbors.



# Events Spotlight

# 2026



**Thursday, Feb. 5**

***A Woman's Heart***



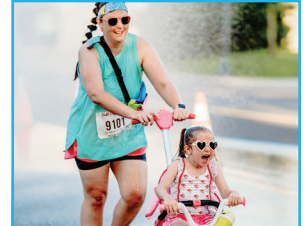
**Saturday, April 11**

***Pink Gala***



**Saturday, June 20**

***Anne Cameron Golf***



**Saturday, June 27**

***Summer Splash 5K***



**August 20 & 21**

***CRMC Golf Classic***



**Saturday, Sept. 19**

***Community Kids Bike Ride***



**Tuesday, Nov. 10**

***Double Donation Day***



**Friday, Dec. 11**

***City Social***

**Run the Cumberland Race Series: [www.RunTheCumberlands.org](http://www.RunTheCumberlands.org)**

Run the Cumberlands is a partnership among established charity races held in the Upper Cumberland region.

For event details visit [www.CookevilleRegionalCharity.org](http://www.CookevilleRegionalCharity.org)

Contact:

Amanda Scott, Events Coordinator at  
[amscott@crmchealth.org](mailto:amscott@crmchealth.org)  
or by calling 931-783-2037



**Cookeville Regional  
CHARITABLE  
FOUNDATION**

# A Note from CRMC CEO

## Thank you for supporting CRMC Foundation.

Cookeville Regional is our community hospital. Because of your support, we are able to focus on people and not profit. Every day, our work is about people taking care of people and caring for our neighbors close to home.

On behalf of CRMC administration, the Board, physicians, staff, and patients, thank you for supporting patient assistance, charity programs, and efforts that help build a healthier Upper Cumberland.

With gratitude,

*Buffy Key*  
CEO



# Upcoming Needs:

# *How you can help*

We currently have several needs in the weeks ahead.



- Volunteers for the Summer Splash 5K and Family Bike Ride
- Volunteer groups for outdoor beautification and safety painting at CRMC
- Donations of gently used medical equipment such as wheelchairs and shower chairs
- Gifts to establish a Cancer Patient Assistance Endowment Fund

*Your support helps meet real needs for local patients and families.*



[www.CookevilleRegionalCharity.org](http://www.CookevilleRegionalCharity.org)

**931-783-2003**